



# Economic Brief

State Representative Donna Oberlander

February 2015

## General Fund Revenue Collections Bring in \$2.4 Billion

General Fund revenue collections for the month of January were \$2.4 billion, which is \$90 million more than expected.

Collections of \$127 million for corporation taxes came in below Department of Revenue projections by \$1 million. Sales tax collections of \$844 million were higher than expected, coming in \$7 million above the official estimate. The Personal Income Taxes collected were \$1.1 billion, which was below estimate by \$14 million.

Year-to-date General Fund collections of \$15.7 billion are above the official estimate by \$360 million.

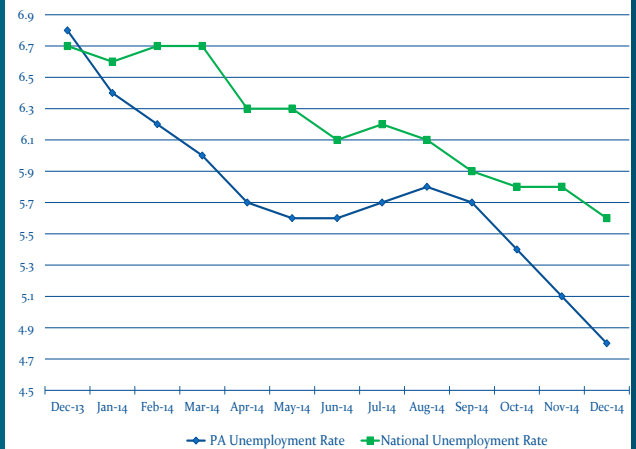
### EMPLOYMENT STATISTICS

	December 2014	Monthly Change
Labor Force	6.37 Million	-1,000 ↓
Unemployment Rate	4.8%	-0.3% ↓
Total Employment	6.058 Million	+13,000 ↑

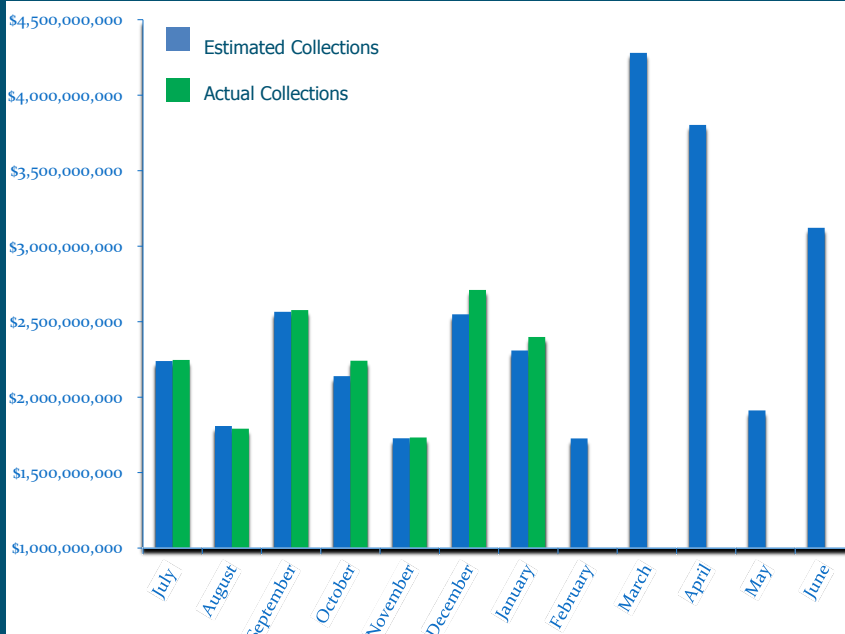
#### 12-Month Change

Total Employment	+68,000
Unemployment Rate	-2.0%

12-Month Unemployment Rates



### General Fund Revenue vs. Estimates



### January Revenue Collections

Estimate	Actual
<b>Total General Fund</b>	<b>Total General Fund</b> ↑
\$2.3 Billion	\$2.4 Billion
<b>Corporation Taxes</b>	<b>Corporation Taxes</b> ↓
\$128 Million	\$127 Million
<b>Sales Taxes</b>	<b>Sales Taxes</b> ↑
\$838 Million	\$844 Million
<b>Personal Income Taxes</b>	<b>Personal Income Taxes</b> ↓
\$1.12 Billion	\$1.1 Billion
<b>All Other Taxes</b>	<b>All Other Taxes</b> ↑
\$202 Million	\$217 Million
<b>Non-Tax Revenue</b>	<b>Non-Tax Revenue</b> ↑
\$18 Million	\$101 Million